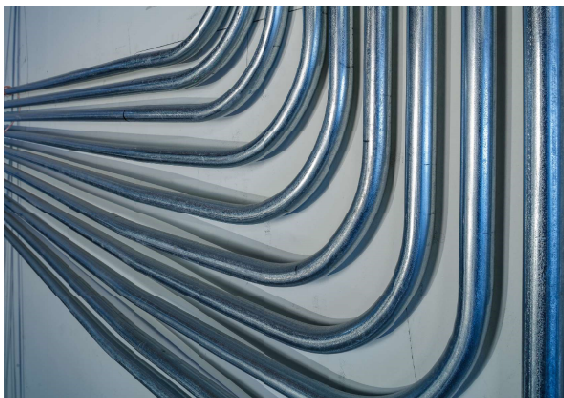
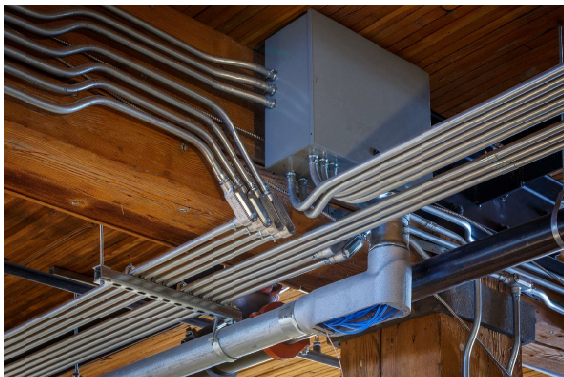


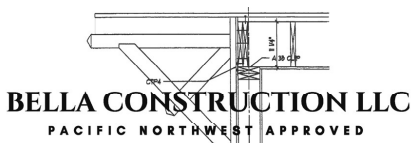
Bella Construction Project

Project: Commercial Tenant Improvement
Client: WJA Design Collaborative, Seattle, Washington
Architect: WJA Design Collaborative, Seattle, Washington



Bella Construction was asked to perform this TI project on a 4,900 square foot space in the Western Building in Seattle's Pioneer Square District. The client, WJA Design Collaborative, wanted a very contemporary, technical/industrial feel to the space, so the extensive electrical work that the project would require - developed by electrical contractor, Kingston Electric, Kingston, Washington - was to be a key design element in the overall look of the finished space. As such, it would remain completely exposed.

The plan called for a complete interior build-out, included all HVAC and mechanical systems, 14-foot doors, constructing and powering 28 workstations, 2 private offices, installing and equipping a full kitchen, 2 conference rooms, 4 restrooms and a reception station. The space also received high and low-voltage lighting throughout, as well as motion and environmental sensors. The project required a clean-sheet design/build of the electrical and power distribution system, which entailed bringing in 480-volt service, installing a K-rated 75 kVA power distribution transformer, and installing a 225 amp 208Y/120 3-phase, 4 wire service panel.



206.713.8665
northfacehome.com